

## 2017/2018 Board Members:

**Jim Porterfield, President**

Community info/General inquiries:  
817-876-8386  
jim@RunawayBayEDC.com

**Andrea Griffeth, Vice President**  
Parks & Recreation

**Steve Holt, Board Member**  
Business Development Inquiries:  
214-384-3680  
steve@fsbwise.com

**Clay Dent, Board Member**  
Community History

**Richard Griffin, Board Member**  
Infrastructure

**Jaime Sturdivant, Board Member**  
Schools/Education

**Vacancy**  
TBD



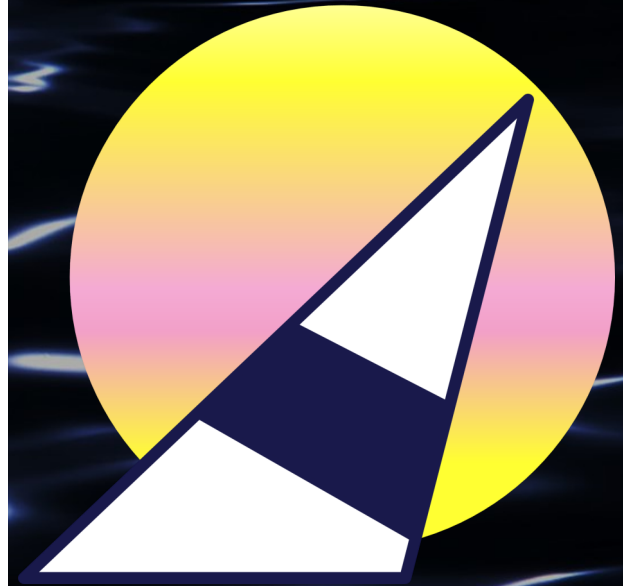
**RUNAWAY BAY**  
www.RunawayBayEDC.com



*The Mission of  
the Runaway Bay  
Economic Development  
Corporation  
is to retain and  
attract businesses  
while capitalizing on  
Runaway Bay's  
lakeside character and  
sense of community.*

[www.RunawayBayEDC.com](http://www.RunawayBayEDC.com)

*Come, Stay,  
Live, Work and Play in*



**Runaway Bay,  
Texas!**

# WE WOULD LIKE TO INVITE YOU TO COME, STAY, LIVE, WORK AND PLAY IN RUNAWAY BAY!



## WHY CHOOSE RUNAWAY BAY, TEXAS?

- ◇ Beautiful environment on the shores of Lake Bridgeport
- ◇ Outdoor sports activities
- ◇ Excellent water sports opportunities including Chupacabra paddling trail
- ◇ Only 18 hole golf course in Wise County
- ◇ Low land prices
- ◇ 1,400 platted lots in the city ready for development
- ◇ Additional 1,100 platted lots in the city's ETJ ready for development
- ◇ Infrastructure already in place
- ◇ Convenient to DFW—
  - 1 hour northwest of Fort Worth
  - 1 hour and 15 minutes from DFW airport
  - Less than 2 hours from Dallas
  - 1 hour west of Denton
- ◇ 3 miles from Bridgeport Municipal Airport with corporate jet access
- ◇ Growth-friendly city leadership

## DIRECTIONS TO RUNAWAY BAY

### From Fort Worth:

- Take **Interstate 35W** north toward Denton
- Exit to **Highway 287** north toward Decatur
- In Decatur, take **Highway 380** west toward Bridgeport/Jacksboro
- Runaway Bay is about 20 miles west of Decatur on Highway 380/114

### From DFW Airport, or Dallas:

- Take **Highway 114** northwest past Texas Motor Speedway
- In Rhome, Texas, merge onto **Highway 287** north toward Decatur
- In Decatur, take **Highway 380** west toward Bridgeport/Jacksboro
- Runaway Bay is about 20 miles west of Decatur on Highway 380/114

### From Denton:

- Take **Highway 380** west toward Bridgeport
- Runaway Bay is 9 miles west of Bridgeport

Satellite view of Runaway Bay, Texas  
on Lake Bridgeport



### Directions from Lubbock:

- Take Highway 82/114 east (250 miles), OR
- Take Highway 84 south and then 380 east (267 miles)

